



December 2025

4-H Family News

Jackson County Connections



HAPPY
HOLIDAYS



MSU Extension Field Crops Team Has a Podcast!

Season 5 of 'In the Weeds' began in September featuring episodes on harvest safety, drones, and canola. Bonus episode: featuring 4-H farmers such as CJ from Westside High Steppers 4-H Club and cohosted by Hayley, Jackson 4-H PC talking about the crops they showed at fair this year.

Hear about lessons learned this growing season and what they plan to do next year. Find 'In the Weeds' on [Spotify](#), [iTunes](#) and on the

[Field Crops Team](#)

website: https://www.canr.msu.edu/field_crops/in-the-weeds.



CONTACT US

Hayley Wineland
winela11@msu.edu
4-H Program Coordinator

Jessica Waldron
waldro45@msu.edu
4-H Program Assistant

Gerilyn Darnell
darnel37@msu.edu
Support Staff

PHONE & EMAIL:

(517) 788-4292

msue.Jackson@county.msu.edu

WEBSITE:

<https://www.canr.msu.edu/jackson/4-h/>

Jackson County 4-H Facebook Page:

<https://www.facebook.com/jacksoncounty4h>

Michigan State University Extension programs and materials are open to all without regard to race, color, national origin, gender, gender identity, religion, age, height, weight, disability, political beliefs, sexual orientation, marital status, family status or veteran status. Issued in furtherance of MSU Extension work, acts of May 8 and June 30, 1914, in cooperation with the U.S. Department of Agriculture. Quentin Tyler, Director, MSU Extension, East Lansing, MI 48824. This information is for educational purposes only. Reference to commercial products or trade names does not imply endorsement by MSU Extension or bias against those not mentioned.



COUNTY CALENDAR OF EVENTS

DECEMBER MEETINGS

**MSUE OFFICE WILL BE CLOSED
DECEMBER 24TH – JANUARY 2ND**

JANUARY MEETINGS

**Thursday 8th 6:00pm
Pocket Pets -See Flyer For Details**

**Monday 12th 6:30pm
Horse Council
MSU Extension Office**

**Tuesday 13th 6:30pm
Small Animal Association- *Potluck
Expectations Meeting
MSU Extension Office**

**Tuesday 20th 6:00pm
Cloverbud Series - See Flyer For Details**

**Wednesday 21ST 6:30pm
Livestock Association
MSU Extension Office**

**Thursday 22nd & 29th
Stained Glass Workshop
See Flyer For Details**

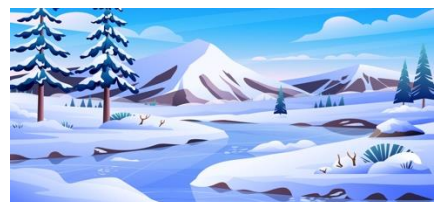
**Monday 26th 6:00pm
4-H Youth Council- *Potluck
MSU Extension Office**

**Association Meetings Are A Great
Opportunity To Meet With
Superintendents To Discuss Fair
Related Questions, Species Specific
Info, And Expectations Packets.
Hope To See You There!!**

STAY CONNECTED WITH JACKSON COUNTY 4-H



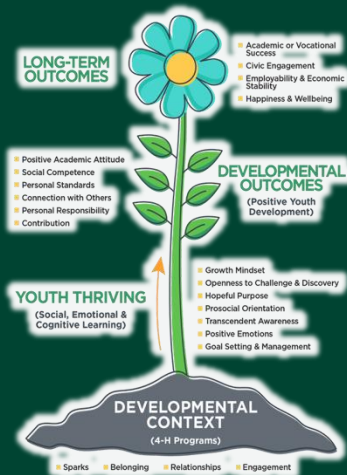
- Jackson County 4-H Facebook Page:
<https://www.facebook.com/jacksoncounty4h>
- Jackson Co. 4-H Small Animal Assoc.
Facebook Page:
<https://www.facebook.com/JacksonCountySmallAnimal>
- Jackson County 4-H Livestock Assoc.
Facebook Page:
<https://www.facebook.com/JacksonCountyLargeAnimal>
- Jackson County Horse Council Facebook
Group:
<https://www.facebook.com/groups/232601997473213>





STATEWIDE CALENDAR OF EVENTS

4-H Thriving Model of Positive Youth Development



Have you ever been to a club meeting that starts with a roll call question? Building a sense of belonging in the 4-H community is one of four core concepts of the 4-H Thriving Model that any 4-H program can intentionally do.

We strive to build this welcoming feeling and offer kindness to help develop a sense of belonging throughout project meetings, club meetings, workshops and events offered. What better way to build a community than to find similarities among the membership?

Some of the questions are simple, some are silly, and some can get more involved depending on the purpose of the meeting. Regardless, it's a great way to get to know everyone. Contact your local 4-H staff for more information.

November 28 – December 14: Fall TSC Paper Clover Campaign

Local Tractor Supply Co.

Support 4-H by purchasing a \$1 paper clover at your local Tractor Supply Co. (TSC) store! Seventy-percent of funds raised stay in the local community where the paper clover was purchased.

www.canr.msu.edu/events/tractor-supply-co-paper-clover-campaign

December 2: Giving Tuesday

Online

Join the #GivingTuesday movement — a global day of giving and a chance to celebrate the opportunities that makes 4-H so extraordinary. 4-H'ers are leading the way in a world full of change and together, we can build a generation ready for anything. We have set a goal to raise \$5,000 to grow 4-H county endowments in a 24-hour period.

mi4hfdtn.org/giving-tuesday/

December 9: 4-H Wild Spartans

Online

Join 4-H staff to take a look into life working with fisheries and wildlife! This month's session is "Adventures in Wildlife Medicine: From the Field to the Clinic." Meet Avery Tilley, a veterinary student at the University of Georgia. Learn about his work, and the education and career path he followed to get there. Open to youth ages 12-19.

www.canr.msu.edu/events/4-h-wild-spartans-december

December 13: 4-H Holidays Around the World Workshop – Hanukkah

Jefferson-Barns Community Vitality Center, Westland

Learn, create and celebrate the Festival of Lights! Open to all youth in grades 3–8, this hands-on workshop includes storytelling, candle-making, snacks, games and festive music. Pre-register by December 8.!

www.canr.msu.edu/events/4-h-holidays-workshop-hanukkah

December 20: 4-H Holidays Around the World Workshop – Christmas in Norway

Jefferson-Barns Community Vitality Center, Westland

Celebrate Norwegian Christmas traditions! Open to youth in grades 3–8, this hands-on workshop includes gnome-making, butter-churning and festive cookie decorating. Pre-register by December 15.

www.canr.msu.edu/events/4-h-holidays-workshop-christmas





COUNTY 4-H NEWS

Small Animal Association Needs A Superintendent



Small Animal Sweepstakes Co-Superintendent

We have an open position for the Jackson County 4-H Small Animal Sweepstakes Co-

Superintendent. If you are interested, please follow the links below

for the superintendent job description and the application.

Applications will be accepted through January 9th at 5pm.

[Jackson County 4-H Superintendent Job Description](#)

[Jackson County 4-H Superintendent Job Application](#)

Beef Pre-Fair Check In

New for 2026: Beef Pre Fair Check In/DNA drop off will be from Monday, February 2nd, through Friday, February 6th, at the Jackson County MSU Extension Office.

All materials are **due by Friday, February 6th at 5:00pm**

Office Hours (M-F): 8:00am-5:00pm

Lunch Closure (M-F): 12:30pm-1:30pm

Extended Hours: Monday & Wednesday evenings (office will be open late)

Here is the link for the **Beef Pre-Fair Check In Form-**

https://docs.google.com/forms/d/e/1FAIpQLSeGZ56zeKxpT1QLCfKyzh6sNI2iWRQWC3QvVAMpPx62R4_5tA/viewform

The form will email you a copy of your submission. You may fill it out early and review or update it before the deadline, if needed.

Early drop off is welcome, including at January Association Meetings****



COUNTY 4-H NEWS



MSUE BIRTH MANAGEMENT FOR GOATS & SHEEP 2026



Would you like to improve birth management of your herd or flock? The MSU Extension team is offering a 4-part webinar series on birth management and separate workshop that will blend applied science and years of practical experience on a comprehensive set of topics that will help you improve your birth management skills. Both novice and veteran producers alike will find this program valuable. Each weekly 2-hour session allows time to ask questions and will be recorded for future viewing.

In addition, there will be a optional, 3-h hands-on session held at the MSU sheep teaching and research center in East Lansing, MI. This optional session is a workshop that focuses on practical skills related to birth management.

FOR MORE INFORMATION AND TO REGISTER PLEASE VISIT

<https://events.anr.msu.edu/Birthmanagement/> or call the Jackson Extension office 517-788-4292.

Do you need to get certified as a pesticide applicator or renew an expired license?



This winter, join MSU Extension at one of the 28 in-person testing opportunities across the state. March 4 MSU Extension Jackson will host a review (1715 Lansing Ave, Jackson, MI). There will be a review of core materials followed by the Core exam. Aerial and Fumigation category exams also available. Review session fee \$25. 4 RUP.

To register for the Jackson event or any of the other sessions, visit <https://events.anr.msu.edu/2026pesttest/> or call the Jackson Extension office 517-788-4292



JACKSON COUNTY 4-H STAINED GLASS SERIES



JANUARY

22

6:30-8:30PM

This beginner stained glass session will introduce you to the basics of cutting, shaping, and designing your own colorful 2D creation.

JANUARY

29

6:30-8:30PM

Ready for more? In this advanced stained glass session, you will add exciting details making your 2D project 3D.

BEGINNER: \$15
BEGINNER +
ADVANCED: \$20



WHO: Jackson County 4-H Youth 10 Yrs Old & Older. Adults Can Join In On The Fun Too!

WHERE: MSU Extension Office
1715 Lansing Ave, Ste 257
Jackson, MI 49202

REGISTER: Email Jessica Waldron at
WALDRO45@MSU.EDU
By January 15th

***YOU HAVE TO ATTEND 1/22
IN ORDER TO ATTEND 1/29**



JACKSON CO. 4-H POCKET PETS & CATS



Got a bird, a reptile, a cat, an ant farm, a gerbil, or another pocket-size pal? Join the club made just for you! Dive into hands-on activities, meet amazing guest speakers, learn how to keep your critter thriving, explore animal-focused careers, and show off your pet at the Jackson Co. Fair!

MEETING DATES:

Jan 8th

Feb 12th

March 12th

April 9th

May 14th

June 11th

TIME:

6PM -7:30PM



**MSU EXTENSION
OFFICE
1715 LANSING
AVE, STE 257
JACKSON, MI
49202**



SIGN UP AT
WALDR045@MSU.EDU
FOR MORE INFORMATION
ABOUT 4-H CONTACT

Jessica Waldron
at 517-788-4292



Michigan State University Extension programs and materials are open to all without regard to race, color, national origin, gender, gender identity, religion, age, height, weight, disability, political beliefs, sexual orientation, marital status, family status or veteran status. Issued in furtherance of MSU Extension work, acts of May 8 and June 30, 1914, in cooperation with the U.S. Department of Agriculture. Quentin Tyler, Director, MSU Extension, East Lansing, MI 48824. This information is for educational purposes only. Reference to commercial products or trade names does not imply endorsement by MSU Extension or bias against those not mentioned



JACKSON COUNTY 4-H CLOVERBUDS

JOIN THE FUN!!

- * January 20th - Tie Dye Time
- * February 17th - Chef Cloverbud
- * March 17th - Canvas Painting
- * April 21st- Rock Lab: Explore, Sort, & Create
- * May 19th - Buzz Builders: Inside The World of Bees
- * June 16th- 4-H Council Night (activities the youth council)

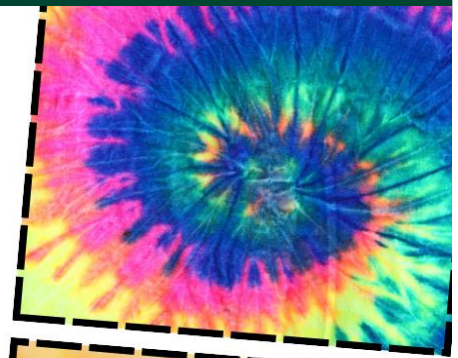
ALL ACTIVITIES ARE
FROM 6-7:30PM
COST \$5 PER ACTIVITY
MSU EXTENSION
OFFICE
1715 LANSING AVE
STE 257
JACKSON, MI 49202

OPEN TO ALL JACKSON
CO. 4-H MEMBERS
5-7 YRS OLD.
FOR MORE INFO PLEASE
CONTACT JESSICA
WALDRON AT
517-788-4292 OR
WALDRO45@MSU.EDU



**REGISTER AT:
WALDRO45@MSU.EDU
BY THE FRIDAY
BEFORE EACH CLASS**

MICHIGAN STATE UNIVERSITY EXTENSION PROGRAMS AND MATERIALS ARE OPEN TO ALL WITHOUT REGARD TO RACE, COLOR, NATIONAL ORIGIN, GENDER, GENDER IDENTITY, RELIGION, AGE, HEIGHT, WEIGHT, DISABILITY, POLITICAL BELIEFS, SEXUAL ORIENTATION, MARITAL STATUS, FAMILY STATUS OR VETERAN STATUS. ISSUED IN FURTHERANCE OF MSU EXTENSION WORK, ACTS OF MAY 8 AND JUNE 30, 1914, IN COOPERATION WITH THE U.S. DEPARTMENT OF AGRICULTURE. QUENTIN TYLER, DIRECTOR, MSU EXTENSION, EAST LANSING, MI 48824. THIS INFORMATION IS FOR EDUCATIONAL PURPOSES ONLY. REFERENCE TO COMMERCIAL PRODUCTS OR TRADE NAMES DOES NOT IMPLY ENDORSEMENT BY MSU EXTENSION OR BIAS AGAINST THOSE NOT MENTIONED





STATEWIDE 4-H NEWS

Mandatory reporting guidelines for Michigan 4-H volunteers

MSU Extension has updated its mandatory [reporting guidelines](http://www.canr.msu.edu/od/civil_rights_diversity_multiculturalism/civil_rights_compliance) (www.canr.msu.edu/od/civil_rights_diversity_multiculturalism/civil_rights_compliance) to align with MSU's policy (UW-02-01). All volunteers are required to report incidents of child abuse, neglect, or misconduct promptly. Reports should be made to MSU's Office for Civil Rights (MSU OCR) and, when applicable, to Children's Protective Services (CPS)/Department of Health and Human Services. In short, volunteers should:

1. In emergencies: Call 911 immediately.
2. Child abuse/neglect: Call CPS at 855-444-3911 and file [DHS-3200](http://www.michigan.gov/mdhhs/adult-child-serv/abuse-neglect/childrens/mandated-reporters) (available at www.michigan.gov/mdhhs/adult-child-serv/abuse-neglect/childrens/mandated-reporters) within 72 hours.
3. All other incidents: Report to MSU OCR via online form at <https://msu.guardianconduct.com/incident-reporting/>; phone at (517) 353-3922 between the hours of 8:00 a.m.-12:00 p.m. and 1:00-5:00 p.m. Monday through Friday; by mail at 408 W. Circle Dr., Suite 105, Olds Hall, East Lansing, MI 48824; or by email at ocr.isr@msu.edu.
4. Please notify your local MSU Extension staff after submitting a report.

Shop with purpose: 4-H gifts that give back

'Tis the season to spread joy and support 4-H youth while doing it! Consider the following options in your holiday shopping to make the holidays merry, bright and meaningful!

Michigan Shop 4-H Store: Buy your favorite Michigan 4-H apparel, drinkware, and essentials at the SHOP 4-H Online Store! Offered in collaboration with National 4-H Council, the Michigan 4-H store offers Michigan 4-H branded apparel and other gifts for your favorite 4-H'er, volunteer, alumni, professional or fan! A percentage of all proceeds will be donated to Michigan 4-H. Visit <https://bit.ly/30pdNJw>.



My Pottery Place: Get crafty with 4-H pottery! From mugs to ornaments, you can paint your own masterpiece while supporting youth programs—5% of every 4-H licensed pottery purchase goes to 4-H. Learn more at mypotteryplace.com/product-category/all-products/4-h/.

Mickman Brothers: Decorate your home with beautiful greenery and purpose: 15% of the proceeds from each wreath or evergreen purchased at 4hwreaths.com will benefit 4-H.

Twisted X: Step into the season with style! The Twisted X 4-H Collection has shoes for the whole family and 6% of each pair sold supports 4-H! Learn more at twistedx.com/pages/4h-collection.

Georgia Boot: Built for hard work and big dreams, Georgia Boot is a proud supporter of 4-H. Consider giving their boots, which are ready for any adventure, especially a 4-H project! Shop at georgiaboot.com.

Michigan 4-H Dog Showmanship Manual updated

The Michigan 4-H Dog Showmanship Manual has been updated! A major update to the previous version, this guide provides the basic information needed to compete successfully in 4-H dog showmanship classes. Be sure to check out the resources section of the manual for additional useful books, websites and videos.

View the updated manual at www.canr.msu.edu/resources/michigan-4-h-dog-showmanship-manual.



Fair Prep

BECAUSE IT'S NEVER TOO EARLY TO START PREPARING

How To Market Your 4-H Livestock Project



Want to Rock Your 4-H Auction Experience?

Learn how to market your project like a pro, attract potential buyers to the auction, and write a thank you card that really stands out (because it should be more than just "thanks for supporting me")!

Check out these helpful links for tips, ideas, and inspiration to make the most of your 4-H journey!



[HTTPS://WWW.CANR.MSU.EDU/YOUTH_BUSINESS_GUIDE_TO_SUCCESS/4-H-ANIMAL-PROJECT-MARKETING-RESOURCES/BEEF](https://www.canr.msu.edu/youth_business_guide_to_success/4-h-animal-project-marketing-resources/beef)

[HTTPS://WWW.CANR.MSU.EDU/YOUTH_BUSINESS_GUIDE_TO_SUCCESS/4-H-ANIMAL-PROJECT-MARKETING-RESOURCES/SHEEP-GOATS](https://www.canr.msu.edu/youth_business_guide_to_success/4-h-animal-project-marketing-resources/sheep-goats)



[HTTPS://WWW.CANR.MSU.EDU/YOUTH_BUSINESS_GUIDE_TO_SUCCESS/4-H-ANIMAL-PROJECT-MARKETING-RESOURCES/SMALL-ANIMAL](https://www.canr.msu.edu/youth_business_guide_to_success/4-h-animal-project-marketing-resources/small-animal)

https://www.canr.msu.edu/youth_business_guide_to_success/4-h-animal-project-marketing-resources/general-marketing-resources

**SHOWMANSHIP/
SWEEPSTAKES
PACKETS**

**POULTRY
DAIRY GOATS
MEAT GOATS**

RABBITS

DOG OBEDIENCE

HORSE

SHEEP

MARKET BEEF

SWINE

DAIRY

JACKSON COUNTY FAIR 2026 DATES AUGUST 9TH – 15TH